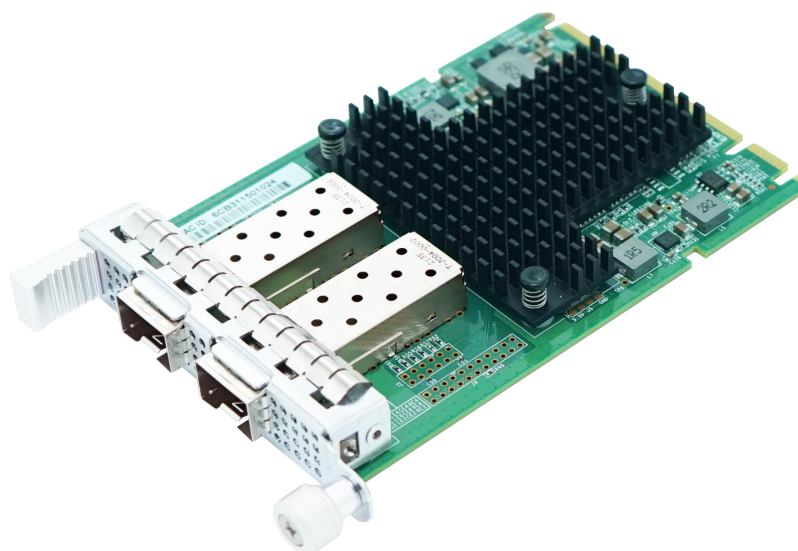


LRES3029PF-OCP

—OCP3.0 Dual-port 25G SFP28 Ethernet Network Adapter (Intel Chip E810 Based)

Overview



LRES3029PF-OCP is a dual-port 25G Ethernet network adapter with OCP3.0 SFF structure developed by Shenzhen Lianrui Electronics Co., LTD based on Intel E810 chip. Virtualization applications with 1/10/25G connection to meet network infrastructure, based on the RDMA feature of iWARP, RoCEv2 to achieve direct memory to memory data communication between applications over the network.

LRES3029PF-OCP also has ADQ technology by using specific resources for key work, ADQ uses optimized application thread to device data path to achieve specific application data control, signaling and rate control, improve the scalability and predictability of server running programs; At the same time, THE DDP technology used by LRES3029PF-OCP is enhanced in data cloud computing and virtualized workloads. DPDK is more efficient in packet forwarding and packet processing, and has more flexibility.

LRES3029PF-OCP can be used to connect at 1/10/25g speed, which is enough to cope with different link modes and specifications. With flexibility and high performance, users are more assured in the choice of use.

Key Features

1. An Intel solution OCP3.0 SFF structure of the dual port optical fiber 25G Ethernet network adapter;
2. With a rate of 1/10/25g;
3. RDMA feature technology based on iWARP and RoCEv2;
4. It can enhance DPDK to be more efficient and flexible in packet forwarding and packet processing.

Specifications

Controller	Intel E810
Baffle Height	SFF
Power Consumption	*
System Support	Windows Server 2016 R2/2019 R2/2022 R2
	Linux SLES 12.x or later
	CentOS / RHEL 7.x or later
	Ubuntu 16.x or later
	FreeBSD 11.x/12.x or later
	Linux Stable Kernel version 3.10.x/4.x or later
Bus Type	OCP3.0 SFF
Data rate	1/10/25GbE
Connector	2*25G SFP28

Technical Features

Protocol Support	IEEE 802.3by-2016 25GBASE-X Ethernet IEEE 802.3ae 10GBASE-X Ethernet IEEE 802.3z 1000BASE-X Ethernet IEEE 802.3ap IEEE 802.3ad IEEE 802.1Q IEEE 802.1Qaz IEEE 802.1Qbb IEEE 802.1Qbg IEEE 1588 PTP IEEE 802.3az - Energy Efficient Ethernet
PXE/UEFI	Yes

DPDK	Yes
Jumbo Frames	Yes
iSCSI	No
Jumbo Frames	Yes
FCoE	No
RDMA/VF	iWARP、RoCEv2、iSER、iSCSI

Environment Features

Operating Temperature	0 °C to 105 °C (32 °F to 221 °F)
Storage Temperature	-40 °C to 115 °C (-40 °F to 239 °F)
Storage Humidity	Maximum: 90% non-condensing relative humidity at 35 °C

Physical Features

Size(mm)	115*76
Weight(g)	*

LED Indicators

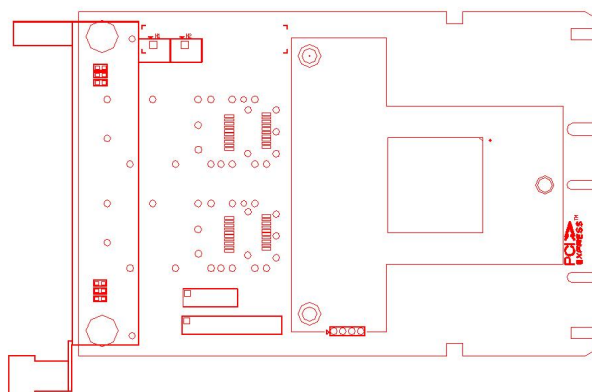
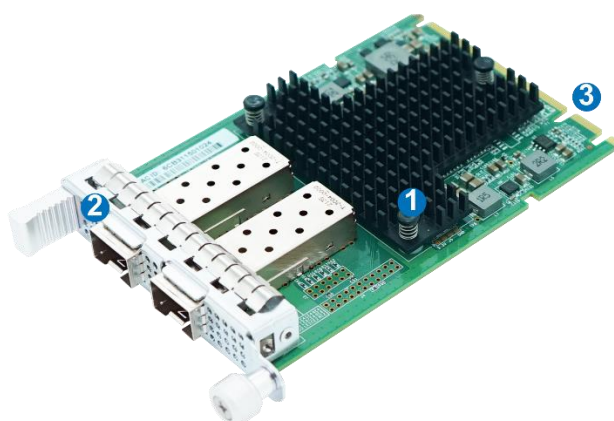
LED Indicators	25Gbps, Yellow Blink + Green Link
	10Gbps, Green Blink + Green Blink
	1Gbps, Yellow Blink

Order Information

P/N	Description
LRES3029PF-OCP	OCP3.0 Dual-port 25G SFP28 Ethernet Network Adapter (Intel E810 Chip Based)

PS: Above details are only for reference, if there is any change, no prior notice.

Product Structure



1. Heat sink
2. 2*25G SFP28 Connector
3. OCP3.0 SFF Bus

PS: Above details are only for reference, if there is any change, no prior notice.

Companion Products

Fiber NIC

- § LR-LINK PCI 100FX Desktop Adapter
- § LR-LINK PCIe 100FX Desktop Adapter
- § LR-LINK PCI 1000BASE-SX/LX Desktop Adapter
- § LR-LINK PCIe 1000BASE-SX/LX Desktop Adapter
- § LR-LINK PCIe 1000BASE-SX/LX Server Adapter
- § LR-LINK PCIe 10GBASE-SX/LX Server Adapter
- § LR-LINK PCIe 25GBASE-SX/LX Server Adapter
- § LR-LINK PCIe 40GBASE-SX/LX Server Adapter
- § LR-LINK PCIe 100GBASE-SX/LX Server Adapter

Copper NIC

- § LR-LINK PCI 10/100Mbps Desktop Adapter
- § LR-LINK PCIe 10/100Mbps Desktop Adapter
- § LR-LINK PCI 10/100/1000Mbps Desktop Adapter
- § LR-LINK PCIe 10/100/1000Mbps Desktop Adapter
- § LR-LINK PCIe 10/100/1000Mbps Server Adapter
- § LR-LINK PCIe 100/1G/10Gbps Server Adapter
- § LR-LINK PCIe 1G/2.5G/5G/10Gbps Server Adapter

Download Drivers

To get the drivers, please visit us at <http://www.lr-link.com/support/driver.html>.

Product Quick Guide

To know the network card basic knowledge to choose the suitable NIC you need, please visit us at: <http://www.lr-link.com/productchoose.html>.

Customer Support

LR-LINK customer Support Services offers a broad selection of programs including phone support and warranty service. For more information, contact us at Service and availability. <http://www.lr-link.com/contactus.html>

Shenzhen Lianrui Electronics Co.,LTD.

Shenzhen Lianrui Electronics Co.,Ltd is an efficient Ethernet adapter design company with independent research and development, using Intel, Net-swift, Tehuite, Broadcom, Realtek and other manufacturers Ethernet controller, developed by our company's independent R & D design team, manufactured by our company workshop, and then sell.

Declaration

Our products specifications come from modifying the chip manufacturer's specifications released. Product features, technical parameters, technology right, intellectualproperty rights and brand names etc.mentioned in specifications are just referenced only. There is no infringement meaning. If there is any important and sensitive content related, please contact our Lianrui company, we'll delete them, Thank you.

SHENZHEN LIANRUI ELECTRONICS CON.,LTD.

ADD: C4 Bldg.,Xintang Industry Zone,Baishixia FuyongTown,Baoan District Shenzhen China

14 / F, Building T10, Ocean New World, Shenglong Rd Longcheng Street, Longgang District, Shenzhen, Guangdong, China

Tel:+86(0)755-33671531 33671533 Fax:+86(0)755-29082065

Product Sales service@lr-link.com

Technical Support support@lr-link.com

WEB www.lr-link.com

reserved

LR-LINK

Copyright © Shenzhen Lianrui Electronics CO.,LTD,2006-2021. All rights reserved